



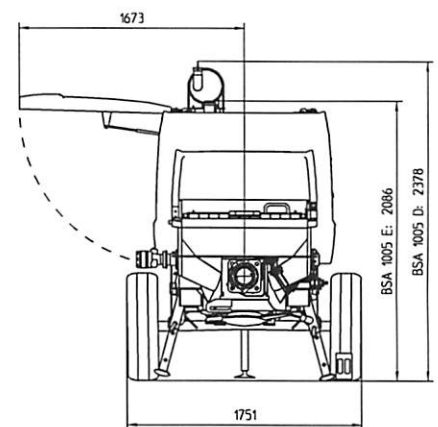
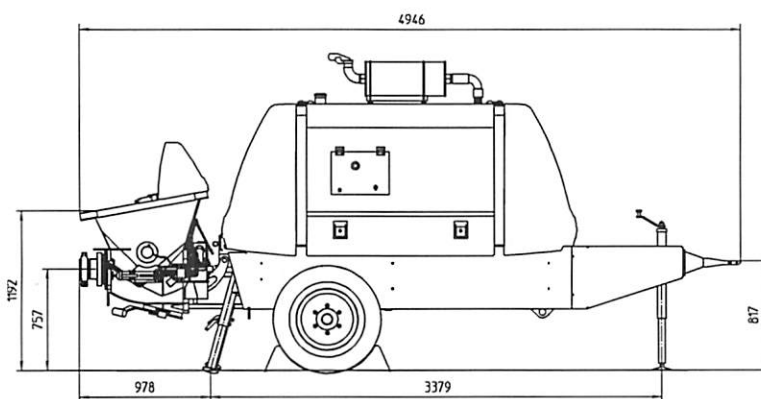
Putzmeister

Stationary concrete pump

BSA 1005 D

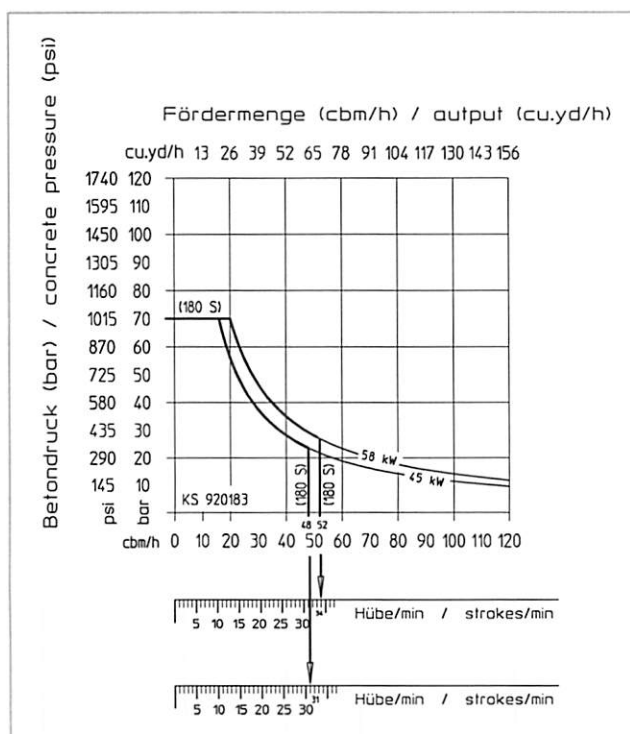
BSA 1005 E

Output up to 52 m³/h
Delivery pressure up to 70 bar



Note: Standard. Dimensions and weights depend on equipment.

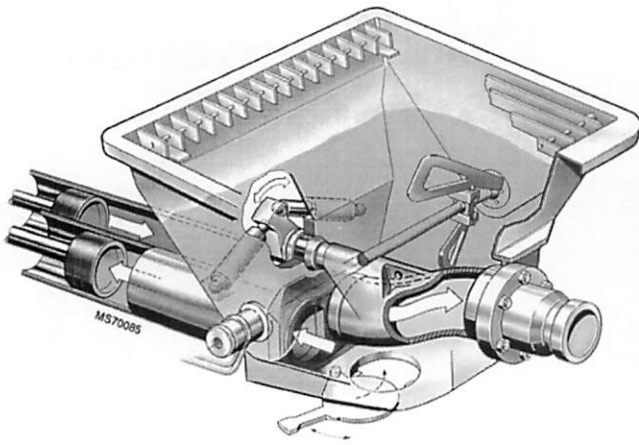
Performance diagram



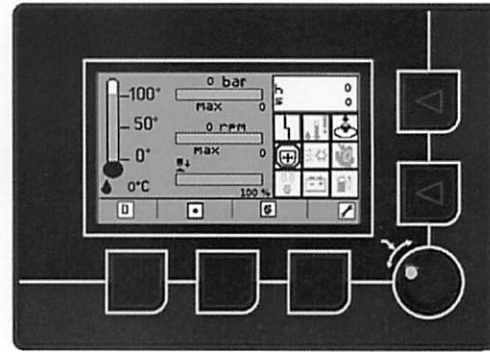
Technical data

Model		BSA 1005 D	BSA 1005 E
Material number		102310.000	102311.000
Output	m ³ /h	52	48
Delivery pressure	bar	70	
Delivery cylinder	Ø mm	180	
Delivery cyl. stroke	mm	1000	
Strokes / minute		34	31
Engine / motor power	kW	58	45
Hopper		RS 487K	
Capacity	l	ca. 350	
Filling height	m	1,2	
Transfer tube		S 1812	
Line connection	mm	SK 125	
Pressure connection	"	5,5	
Control system		SPC-OPS	
Diesel tank	l	120	–
Weight	kg	3000	2900

All data maximum theoretical



Hopper with transfer tube



EGD - Ergonic Graphic Display

Serial equipment

Agitator safety switch off
Cable remote control 10 m
Central lubrication on hopper with hand lever press
Cleaning accessories
Coloring:
Cover chrome yellow / black
Pump, frame and trailer light-grey
Roof and splash guard black-grey
Concrete hopper with agitator
Coupling ring (DIN)
Drive diesel, Deutz 58 kW (BSA 1005 D)
Drive electric 45 kW (BSA 1005 E)
Flushing water pump 50 l/min 20 bar
Gate valve connection
Grill 70 mm
Operating manuals (1 x paper, 1 x CD-ROM) spare part list
Outriggers 2 x mech.
Painting: MB 1227 chrome yellow
Set-up foot
Splash guard
Support leg
Tool set incl. standard equipment
Trailer F8, travelling in site

Ergonic equipment

Electronic error management
Ergonic Graphic Display (EGD)
Speed drawdown automatically on pump stop (BSA 1005 D)

See quotation for exact serial delivery scope.
Comprehensive range of options available on request.